



Work with BID (Building Information Detailing)

How to insert, modify architectural, structural, mechanical elements and analyse BIM data quickly

Building Information Detailing (BID)

Why ?

Revit problems:

- How to insert elements by predefined related objects according to the rules automatically?
- How easily to modify parameters of elements what are in particular places (rooms, spaces, zones, levels etc)?
- How to rename space names according to room names from the linked project by one click?
- How to create door numbers what consist of the room number (into which the door opens) and the running letter of the door?
- How to attach filtered spaces to a new zone by one click?
- How to analyse different element quantities of selected phase in different places (rooms, spaces, zones, levels etc)?
- How to calculate real wall finish materials for every room, department, level etc?
- How to create an informative legend with quantities of selected elements grouped by departments, levels etc?
- How to filter elements with different rules?

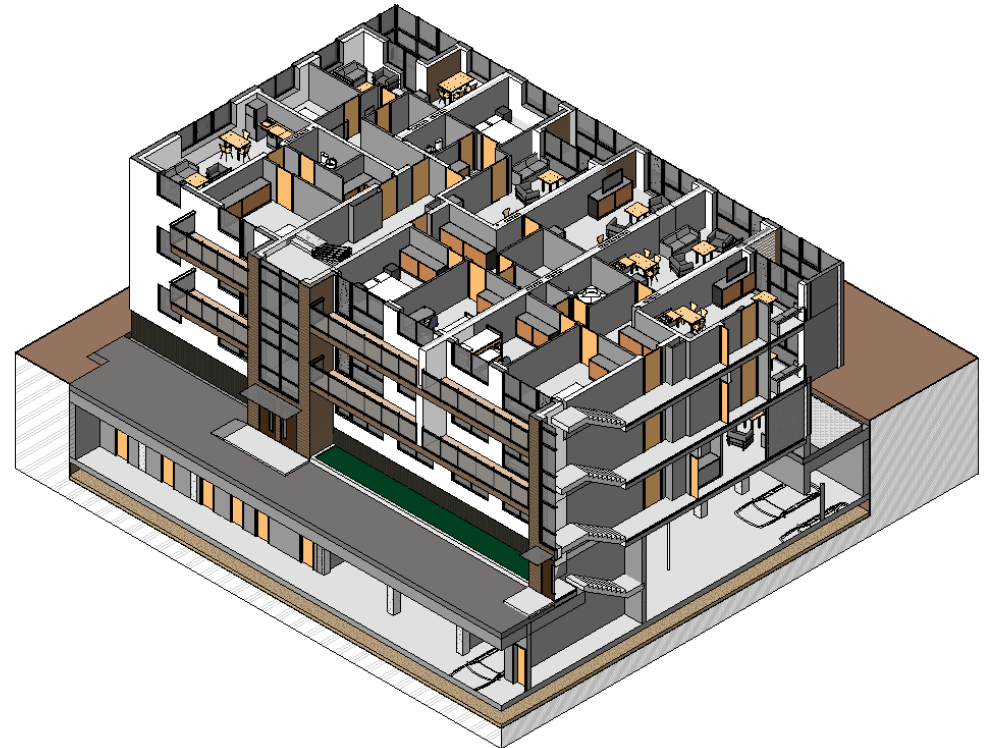


Solution - BID



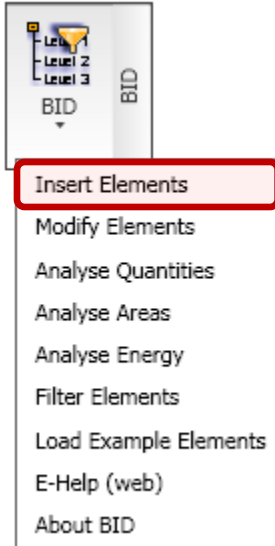
- Insert Elements
- Modify Elements
- Analyse Quantities
- Analyse Areas
- Analyse Energy
- Filter Elements
- Load Example Elements
- E-Help (web)
- About BID

Building Information Detailing (BID) extension works with Revit Architecture, Revit Structure and Revit MEP environment within current project or linked files and provides a set of tools for building model detailing and BIM data analysing.



Working with BID → Insert Elements

Function



The function helps to insert tens of elements (*Structural Elements, Furniture, Lighting Fixtures, Mechanical Equipment, Power Devices etc*) using built-in (customizable) rules into predefined positions which are logically related with other objects.

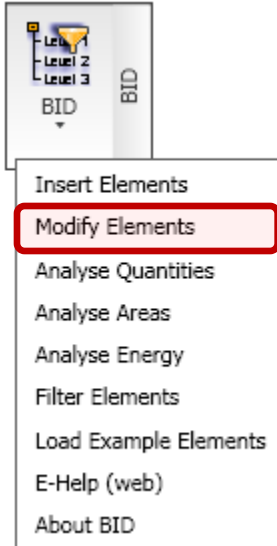
Examples:

- *insert a lighting switch in the right side of a door in every living room from the second to the sixth floor with predefined elevation from floor and the distance from door opening;*
- *insert radiators under the windows in any filtered rooms with predefined elevation;*
- *insert baseboards (cable trays and etc.) in rooms of selected departments with predefined elevation and horizontal trimming distance from doors;*
- *insert the lighting fixture to all kitchens of the project.*



Working with BID → Modify Elements

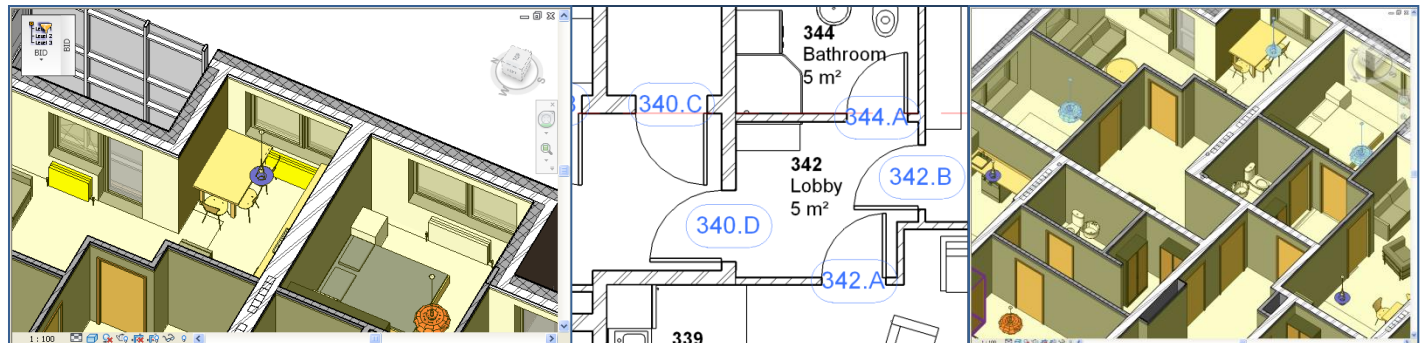
Function



The function gives a possibility to modify/change parameters (like type, material and any geometrical data) of hundreds grouped or sorted different objects by one click. It helps quickly rename/renumber subdivisions of space within a building model like rooms, spaces or areas by predefined rules. A new powerful function allows to number elements in different ways.

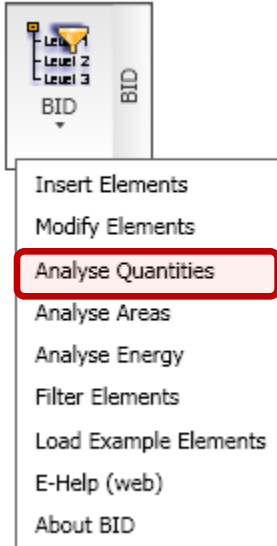
Examples:

- *change the door type and material for all doors which open into bedrooms on the second floor;*
- *change the drop from ceiling parameter value for all lighting fixtures in selected departments;*
- *change width and height of radiators in the filtered spaces or zones;*
- *create doors numbers what consist of the room number (into which the door opens) and the running letter of the door;*
- *rename and renumber all spaces by linked project room data and add Level prefix;*
- *create a new zone and add Office named spaces which exist in the second floor.*



Working with BID → Analyse Quantities

Function



Groups and quantifies objects in different sections of BIM data tree. Calculates areas and room wall finishes and groups all data in different ways.

Examples:

- quantify air terminals in every department of selected zone;
- identify and calculate how many different wall finish materials will be needed for every wall segment of selected department;
- identify how many different wall finish materials will be needed for the first floor and calculate area brutto and netto by ceiling height.

Creates and updates legends for grouped and sorted objects by results of BIM data analyze.

Examples:

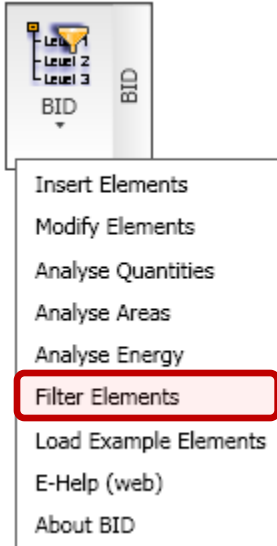
- create an informative furniture legend with graphical element views and quantities grouped for every level and department;
- create an electrical fixtures legend with quantities grouped for every zone and space.

Level	Department	Amoire monobloc à rideaux: Rubu spinta	Amoire monobloc à rideaux: Rubu spinta 2	Amoire monobloc à rideaux: Rubu spinta 500	Art mc rid sp plc
1 Level	F11	3			
1 Level	F12	2	1		1
1 Level	F13	3			
1 Level	F14	4			
1 Level	F15	4			
1 Level	F16	3	1		
1 Level	F17	2		1	
1 Level	F18	3			1
2 Level	F21	3			
2 Level	F22	1	2		
2 Level	F23	3			

Room Level	Room Department	Room Name	Room / Wall Segment / Material Number	Room / Wall Segment Energy	Area Brutto	Area Netto	Room Perimeter / Wall Segment Length
3 Level	A37	Lobby	343	2650	44.599	36.934	16630
			1	3550	0.192	0.192	72.5
			2	3550	12.468	18.579	4705
			3	3550	3.318	1.29	1200
			4	3550	9.156	7.391	3458
			5	3550	0.205	0.205	100
			6	3550	1.59	1.59	600
			7	3550	4.796	4.796	1810
			8	3550	4.902	4.902	1890
			9	3550	6.049	5.949	2037.5
3 Level	A37	WC with Showers	344	2650	23.744	21.959	8960
			1	2650	7.075	7.075	2670
			2	2650	4.796	4.796	1810
			3	2650	7.075	5.29	2070
			4	2650	4.796	4.796	1810

Level	Department	Art mc rid sp plc	Art mc rid sp plc	Art mc rid sp plc
Level 1	F11		8	2
Level 1	F12		4	1
Level 1	F13		4	1
Level 1	F14		4	1
Subtotal		0	20	5
Level -1	F-1		4	1

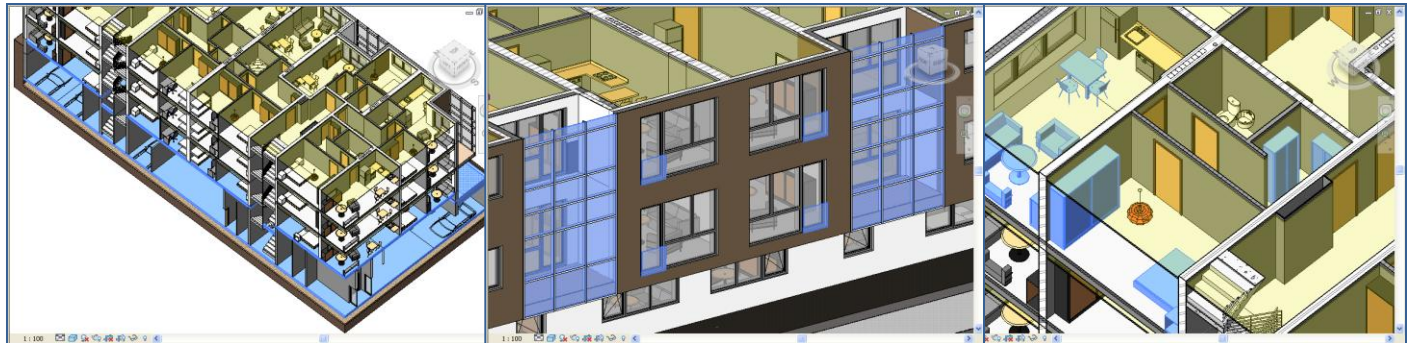
Working with BID → Filter Elements Function



Refines an element selection using different rules.

Examples:

- select furniture, lighting fixtures and caseworks what are inserted in the selected department;
- select a predefined family of electrical fixtures in all kitchens from a new phase;
- select doors which open to all bedrooms of the second floor.



Building Information Detailing

Result

- Objects can be inserted at once into the grouped or filtered places of the model using different built-in rules;
- Parameters of hundreds grouped or sorted objects (like type, material and any geometrical data) can be modified easily by one click;
- The new powerful function allows to number elements in different ways;
- BID helps quickly rename/renumber subdivisions of space within the building model like rooms, spaces or areas by predefined rules;
- All modifications are going in real time, so the user can control this process easily;
- The Analyse data function groups and quantifies objects in different sections of BIM data tree;
- Wall finishes information can be displayed depending on different group methods;
- Analysed results can be built in Revit legend depending on configured settings;
- Analysed results can be exported to Excel;
- Connections with different systems (ERP, Cost estimating solutions and etc.) are available by request of users.
- BID selects elements using different rules.

Increase your productivity !



AGA CAD Ltd.
Zalgirio 112A, LT-09300 Vilnius,
Lithuania
Tel. +370 5 2398111
Fax +370 5 2398113
Email info@aga-cad.lt
info@tools4revit.com
www.tools4revit.com