

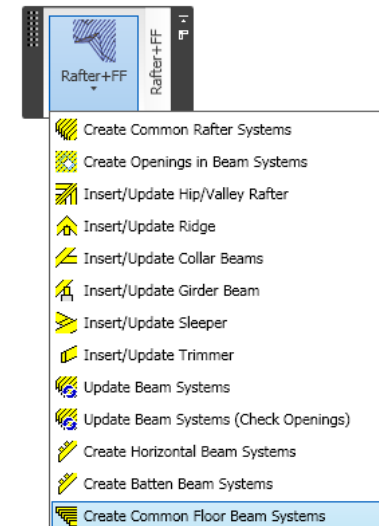
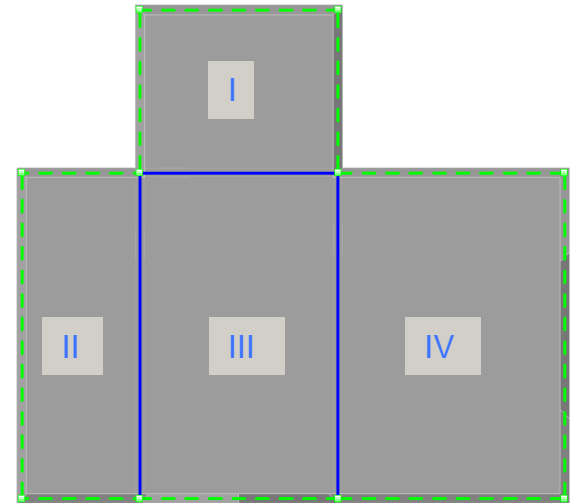
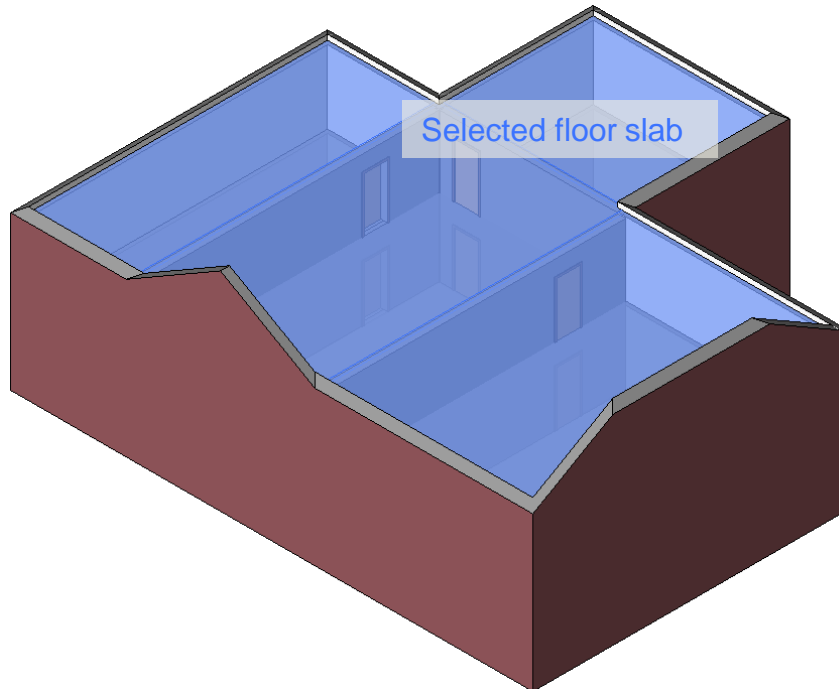


# Create Common Floor Beam Systems Rafter+FF



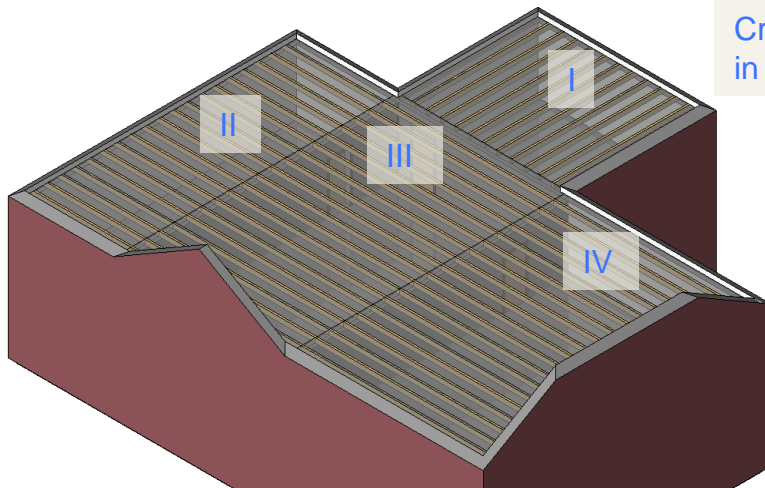
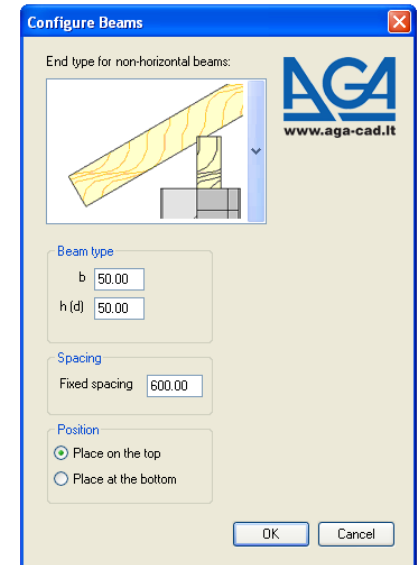
# Create Floor Beam System

- If it's needed, divide a floor slab into segments before creating a floor beam system. Then a separate floor beam system will be created in the every segment.
- Select a floor slab.
- Select *Create Common Floor Beam Systems* from the menu.

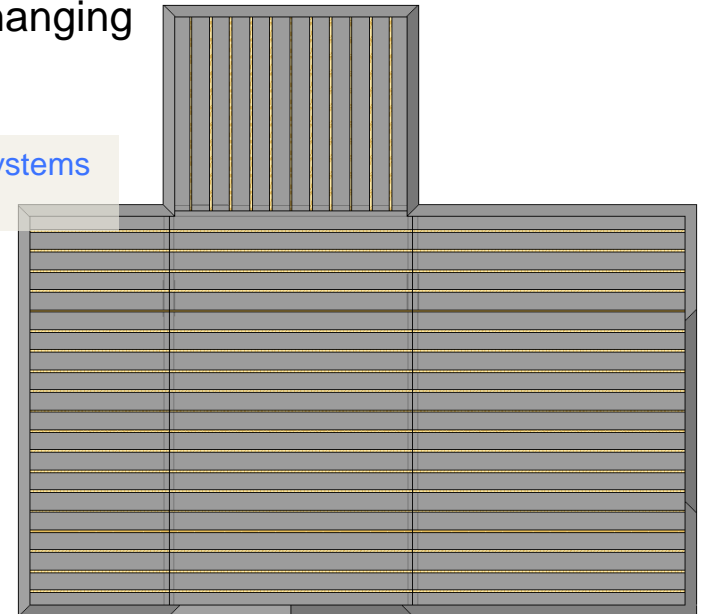


# Create Floor Beam System

- Now you can choose *End cut type* of floor beams.
- Provide dimensions of the beam cross section: *width - b* and *height – h (depth – d)*.
- Enter a distance of *fixed beam spacing* and click *OK*.
- Select a placement of beams. They can be placed on the top or at the bottom of the slab.
- If you need to change the direction of beams, do it by changing the beam direction in the beam system editing mode.

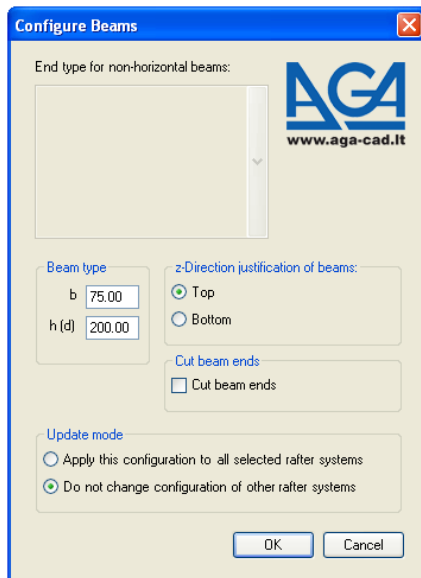
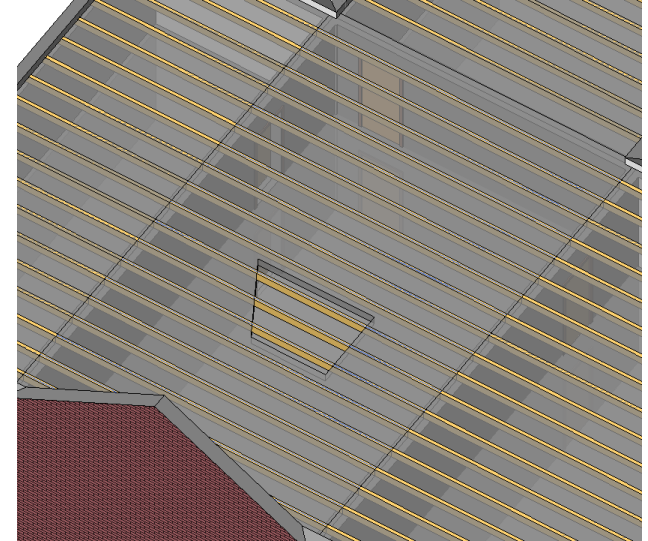


Created four floor beam systems  
in one floor slab

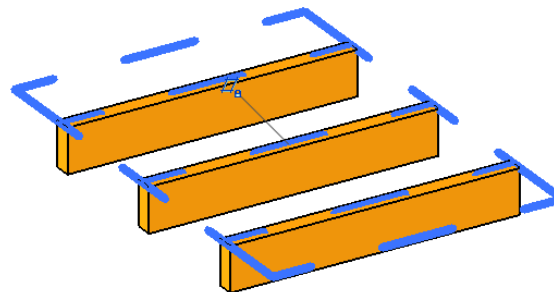


# Update Floor Beam System

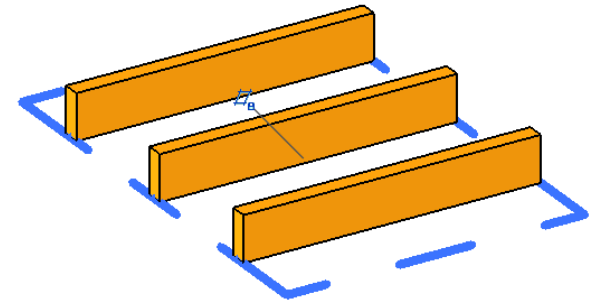
- Select single or multiple floor beam systems and select the command *Update Beam Systems (check openings)* from the menu.
- Provide dimensions of the beam cross section: *width - b* and *height – h (depth – d)*.
- Select Top or Bottom z-Direction justification of beams.



Z-Direction justification Top



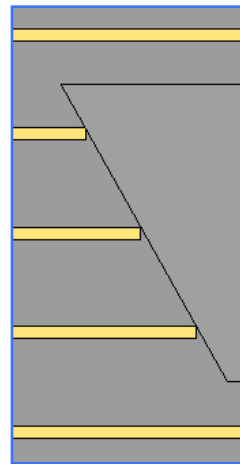
Z-Direction justification Bottom



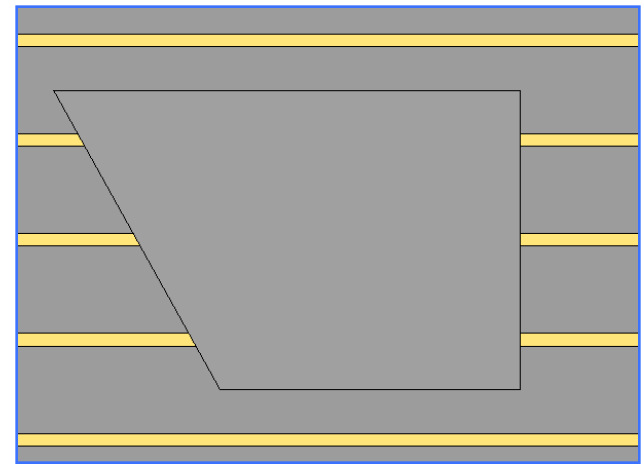
# Update Floor Beam System

- Mark the option *Cut beam ends*, if you want to cut beam ends not perpendicular to the boundary.
- If the option *Do not change configuration of other rafter systems* is selected, no change for beam dimensions are made, joints and cuts are updated.
- If the option *Apply this configuration to all selected rafter systems* is selected, end cut and cross section dimensions are updated, joints and cuts are updated.
- Click *OK* to update beam systems.

NOTE: *Update mode* doesn't appear when you want to update only one beam system.



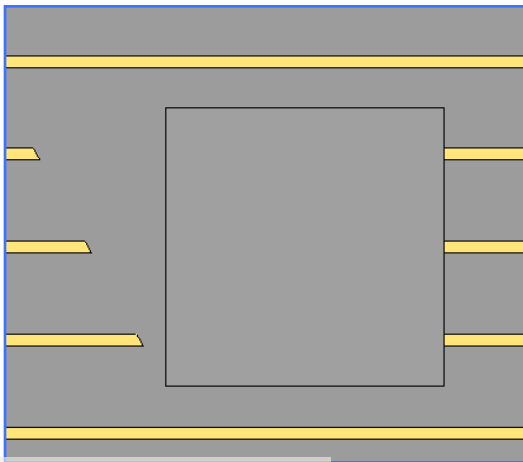
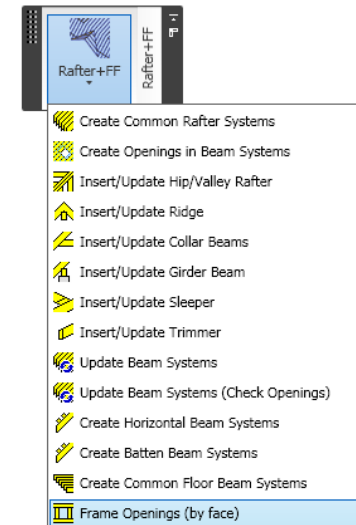
Cut beam ends option not checked



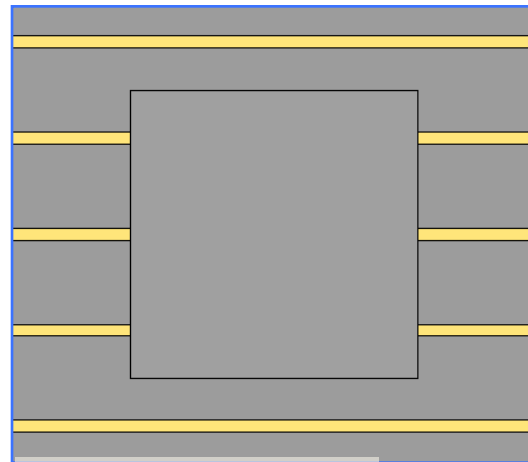
Cut beam ends option checked

# Update Floor Beam System II

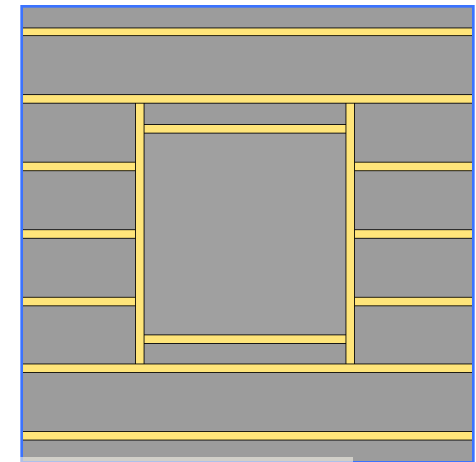
- If the opening changes, select the floor beam system and run the command *Update Beam Systems (check openings)* from menu and click *OK*.
- Use the *Frame openings (by face)* command to frame that opening.



Changed opening

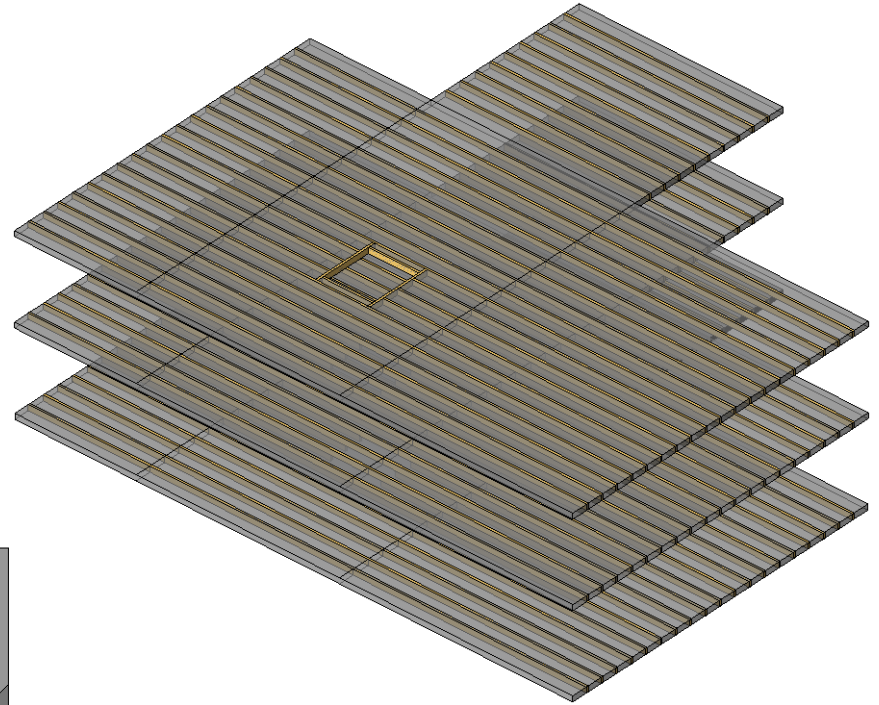
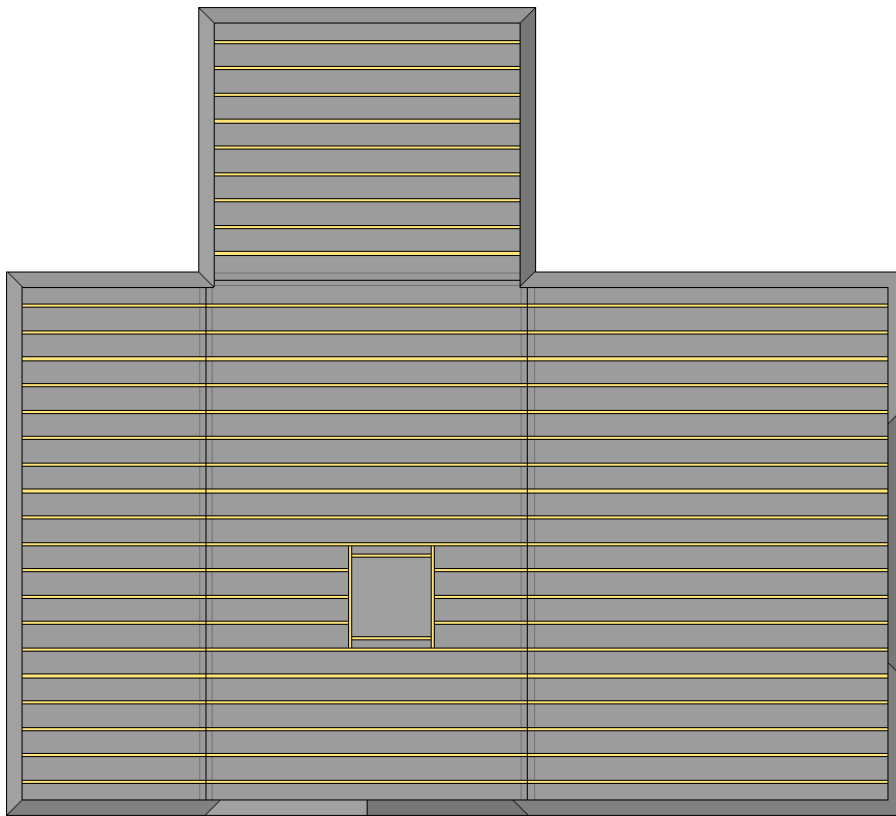


Updated beam system



Framed opening

# Floor Beam System Example



# Increase your productivity !



AGA CAD Ltd.  
Zalgirio 112A, LT-09300 Vilnius,  
Lithuania  
Tel. +370 5 2398111  
Fax +370 5 2398113  
Email [info@aga-cad.lt](mailto:info@aga-cad.lt)  
[info@tools4revit.com](mailto:info@tools4revit.com)  
[www.tools4revit.com](http://www.tools4revit.com)